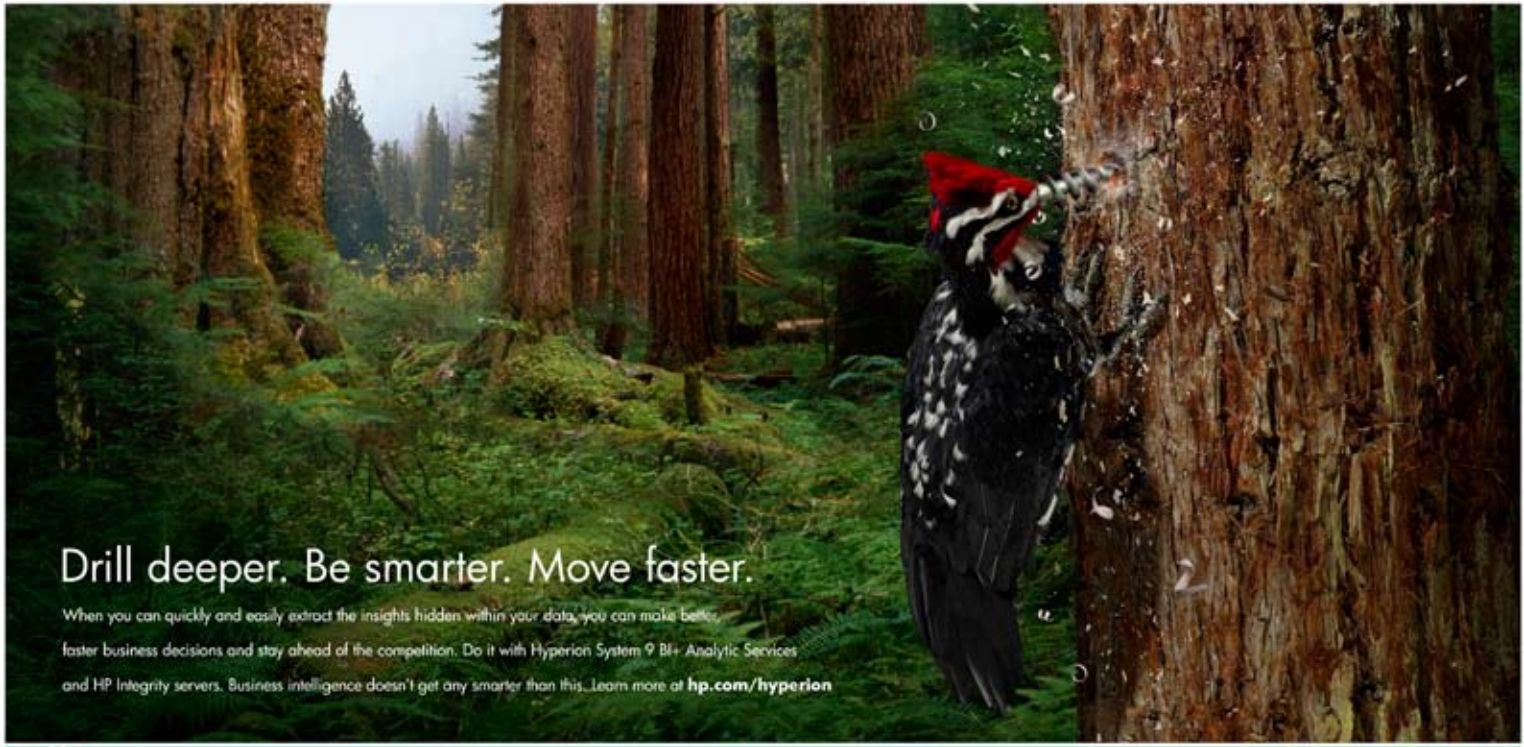




ALFRED TAM ✦ ART DIRECTOR



# Drill deeper. Be smarter. Move faster.

When you can quickly and easily extract the insights hidden within your data, you can make better, faster business decisions and stay ahead of the competition. Do it with Hyperion System 9 BI+ Analytic Services and HP Integrity servers. Business intelligence doesn't get any smarter than this. Learn more at [hp.com/hyperion](http://hp.com/hyperion)



Adapt and thrive.

© 2008 Hewlett-Packard Development Company, L.P.



# Be smarter. Grow faster.

When you can harness the full power of your data, you can make more informed, more insightful business decisions and outgrow your competition. Do it with Hyperion System 9 BI+ Analytic Services and HP Integrity servers. Business intelligence doesn't get any more advanced than this. Learn more at [hp.com/hyperion](http://hp.com/hyperion)



Adapt and thrive.

© 2008 Hewlett-Packard Development Company, L.P.



# Data access, evolved.

When you can gain a unified view of all your company data — no matter where it lives — the critical information you need is never out of reach. Make it happen with Informatica PowerCenter 8 and HP Integrity servers. It's the next evolution in data integration. Learn more at [hp.com/Informatica](http://hp.com/Informatica)



Adapt and thrive.

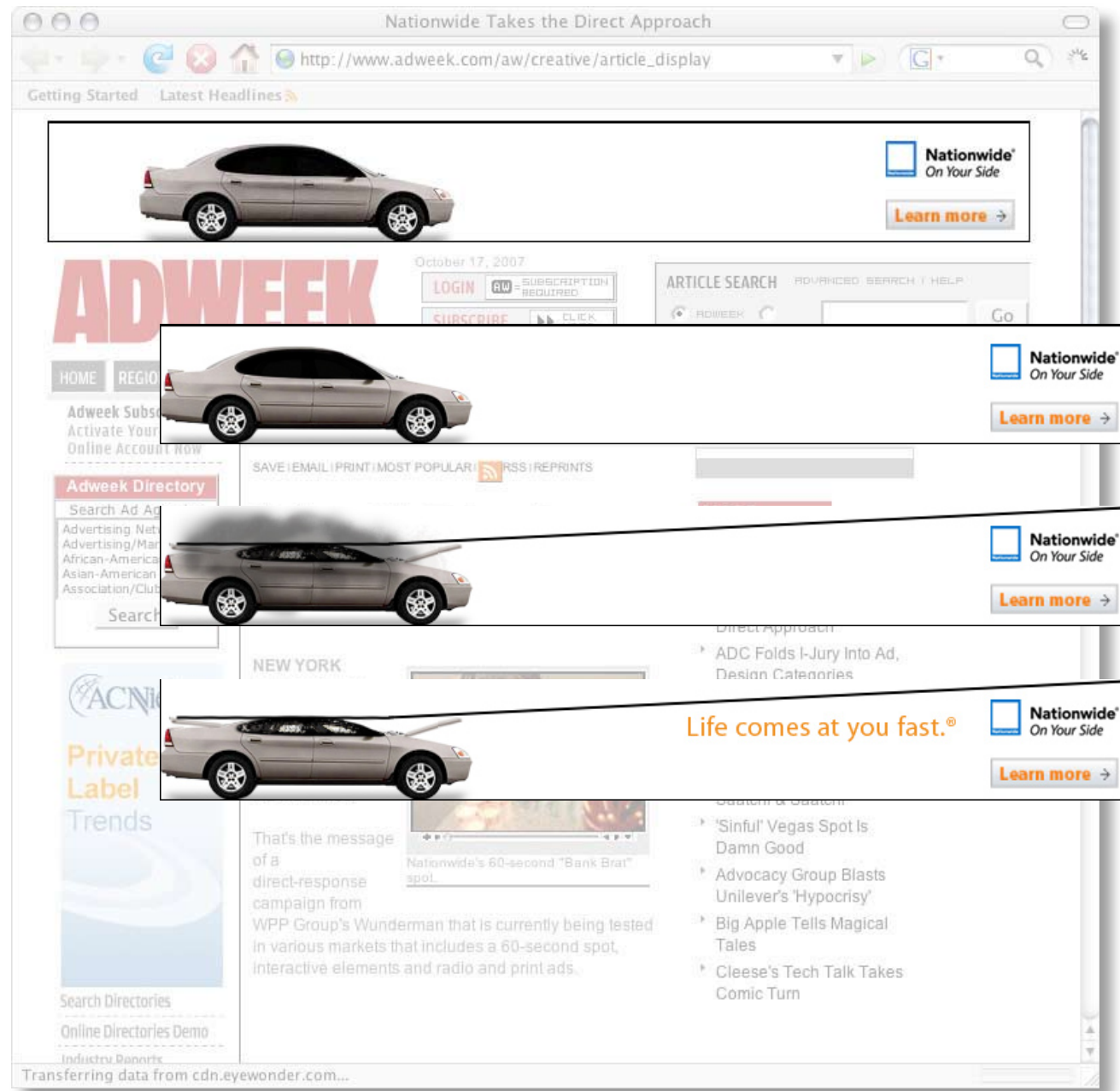
© 2008 Hewlett-Packard Development Company, L.P.

**A WORM IN YOUR  
TEQUILA ISN'T  
A SIGN OF QUALITY,  
IT'S A SIGN OF  
A HEALTH CODE  
VIOLATION.**

**VIVE Cuervo®**  
Hecho en México. Desde 1795.



Jose Cuervo Especial © 2001 Imported and Bottled by Heublein, Stamford, CT under license from the trademark owners. Tequila, 40% Alc. by Vol.





ONE DAY, ALL AIRLINES WILL HAVE  
THE AMENITIES WE HAVE NOW.  
BY THEN, WE'LL HAVE JACUZZIS.

Yes, that's definitely a bar. With bar stools. And a bartender. On a plane. It's probably the best full-service stand-up bar in the sky. In fact, it's the only bar of its kind in the sky. Some passengers even eat their meal at the bar, since they can eat what they want, when they want with our Freedom Menu. Life just keeps getting better in Upper Class. What's next, you ask? Jacuzzis, perhaps? We're working on it.

Business Class to London  
1-800-862-8621  
virgin.com



It's More Expensive

Because We Decided

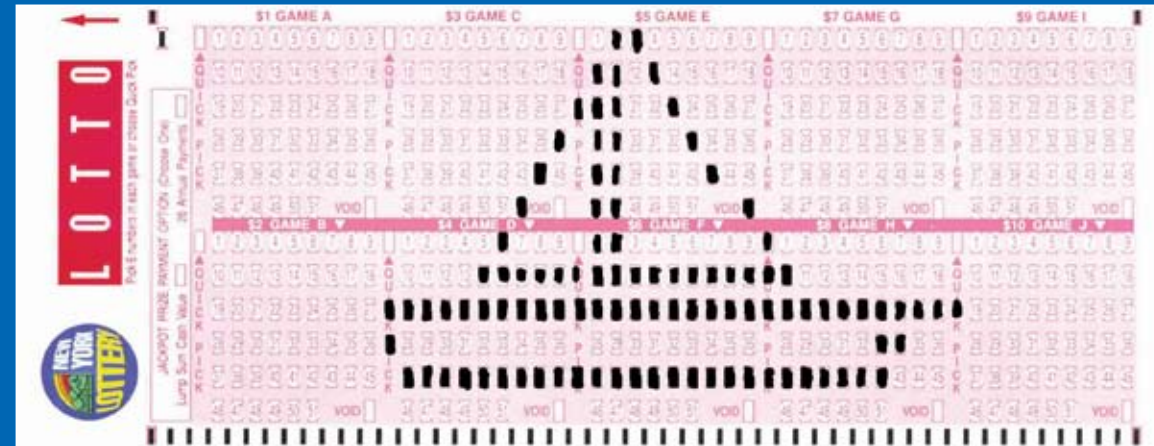
Not To Rip-Off

The Farmers.



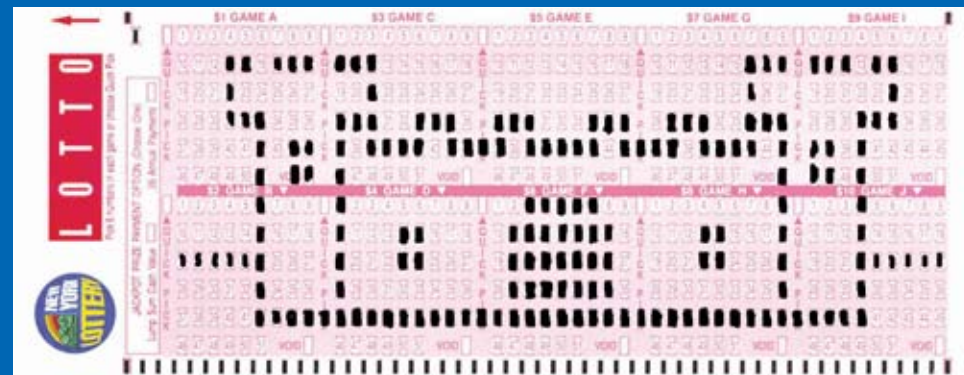
Unlike most coffee companies, Equal Exchange trades directly with small farmers. By doing so we cut out the profiteering middlemen, ensuring that farmers receive a fair price and you get delicious gourmet coffee. Available at Boston stores and cafes. Call 781-830-0279 extension 223 for more info. **SUPPORT SMALL FARMERS**





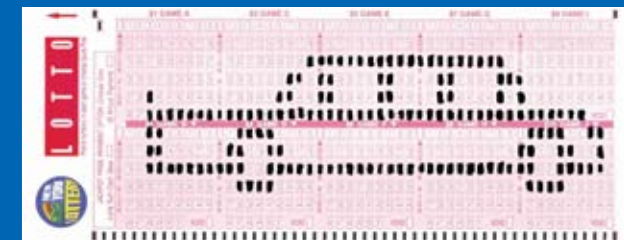
[www.nylottery.org](http://www.nylottery.org)

You must be 18 or older to play New York Lottery games. © 2001. New York Lottery. All rights reserved. The information contained on [www.nylottery.org](http://www.nylottery.org) is believed to be accurate. In the event of a discrepancy between the information displayed on the Web site concerning winning numbers and payouts and the information contained in the official and certified files maintained by the New York Lottery's Drawing Unit, those maintained by the Drawing Unit shall prevail.



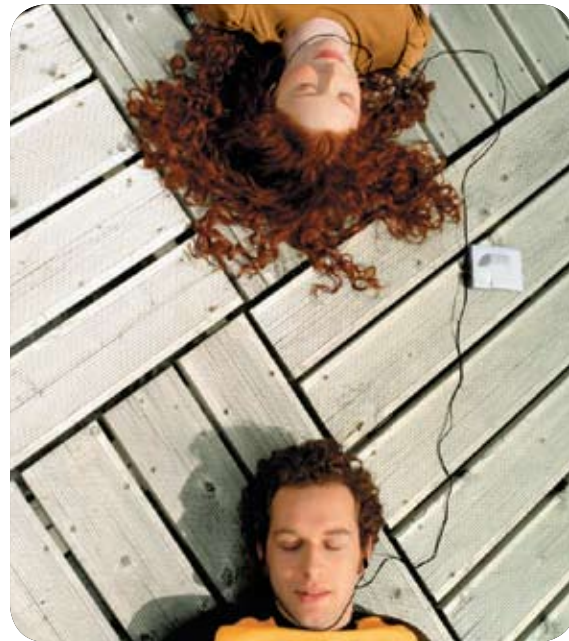
[www.nylottery.org](http://www.nylottery.org)

You must be 18 or older to play New York Lottery games. © 2001. New York Lottery. All rights reserved. The information contained on [www.nylottery.org](http://www.nylottery.org) is believed to be accurate. In the event of a discrepancy between the information displayed on the Web site concerning winning numbers and payouts and the information contained in the official and certified files maintained by the New York Lottery's Drawing Unit, those maintained by the Drawing Unit shall prevail.



[www.nylottery.org](http://www.nylottery.org)

You must be 18 or older to play New York Lottery games. © 2001. New York Lottery. All rights reserved. The information contained on [www.nylottery.org](http://www.nylottery.org) is believed to be accurate. In the event of a discrepancy between the information displayed on the Web site concerning winning numbers and payouts and the information contained in the official and certified files maintained by the New York Lottery's Drawing Unit, those maintained by the Drawing Unit shall prevail.



Live life according to your own terms and conditions.



We get that things can happen. So we created a card that treats you right, starting with no late fees when you use your card for a purchase or cash advance.

- ▶ **No late fees.** Use the card for a purchase or cash advance once each billing period and never pay a late fee.
- ▶ **Press "0"** to speak to a live person.
- ▶ **0% APR** on purchases and balance transfers until 1/1/07



Sign up at [apply.citisimplicity.com](http://apply.citisimplicity.com) or call 1-800-526-2323

\*After the promotional period, the standard APR for purchases will be applied to all remaining balance transfer and promotional purchase amounts. (As of October 1, 2005, the standard variable APR for purchases: 12.74%; the standard variable APR for cash advances: 21.74%.) However, if you are in default under any Card Agreement that you have with us, we may automatically increase the rate on all balances (including any promotional balances) to a variable default rate of up to 30.74%. The minimum finance charge is \$0.50. Foreign purchase transaction fee is 3.0% of purchase amount after its conversion into U.S. dollars.

The transaction fee for cash advances is 3.0% of the amount of each cash advance, \$5 minimum. The transaction fee for balance transfers is 3.0% of the amount of each balance transfer, \$5 minimum, \$75 maximum. However, we will waive the balance transfer transaction fees on balances you transfer in response to this offer. \*\*Late fee will be waived as long as you've used your card for a purchase or cash advance that appears on the same statement; balance transfers do not qualify. New cardmembers only. Subject to credit approval. Additional Terms and Conditions apply.

©2005 Citibank (South Dakota), N.A. Citi, Citibank and Citi with Arc Design are registered service marks of Citicorp. Simplicity is a service mark of Citicorp. MasterCard® is a registered trademark of MasterCard International Incorporated.



No one ever plans to forget.



Sometimes late payments happen to even the best customers. That's why you don't pay fees as long as you use your card.

- ▶ **Press "0"** to speak to a live person.
- ▶ **0% APR** on purchases and balance transfers until 1/1/07



Sign up at [apply.citisimplicity.com](http://apply.citisimplicity.com) or call 1-800-526-2323

\*After the promotional period, the standard APR for purchases will be applied to all remaining balance transfer and promotional purchase amounts. (As of October 1, 2005, the standard variable APR for purchases: 12.74%; the standard variable APR for cash advances: 21.74%.) However, if you are in default under any Card Agreement that you have with us, we may automatically increase the rate on all balances (including any promotional balances) to a variable default rate of up to 30.74%. The minimum finance charge is \$0.50. Foreign purchase transaction fee is 3.0% of purchase amount after its conversion into U.S. dollars.

The transaction fee for cash advances is 3.0% of the amount of each cash advance, \$5 minimum. The transaction fee for balance transfers is 3.0% of the amount of each balance transfer, \$5 minimum, \$75 maximum. However, we will waive the balance transfer transaction fees on balances you transfer in response to this offer. \*\*Late fee will be waived as long as you've used your card for a purchase or cash advance that appears on the same statement; balance transfers do not qualify. New cardmembers only. Subject to credit approval. Additional Terms and Conditions apply.

©2005 Citibank (South Dakota), N.A. Citi, Citibank and Citi with Arc Design are registered service marks of Citicorp. Simplicity is a service mark of Citicorp. MasterCard® is a registered trademark of MasterCard International Incorporated.



Keep earning cash back when you use your card.

5% cash back at supermarkets, drugstores and gas stations.\*

1% cash back on all other purchases.

0% APR on balance transfers for a year.\*\*



It's like finding money in an old jacket over and over again.



Sign up now: [apply.citicards.com](http://apply.citicards.com) (offer code FIN3)

\* You may accumulate a maximum of \$300 in Dividend Dollars in a calendar year, payable in checks of \$50 or more only upon your request. Dividend Dollars will not accumulate on returned purchases, fees or finance charges. Dividend Dollars earned through the Citi Dividend Merchant Network do not count toward the calendar-year maximum of \$300 in Dividend Dollars. You will be given further information when you apply.

\*\* After the promotional period, the standard APR for purchases will be applied to all remaining balance transfer amounts. (As of October 1, 2005, the standard variable APR for purchases: 12.74%; the standard variable APR for cash advances: 21.74%.) However, if you are in default under any Card Agreement that you have with us, we may automatically increase the rate on all balances (including any promotional balances) to a variable default rate of up to 30.74%. We may also increase the promotional rate if you fail to make payments to another creditor when due. The minimum finance charge is \$0.50. Foreign purchase transaction fee is 3.0% of purchase amount after its conversion into U.S. dollars. The transaction fee for cash advances is 3.0% of the amount of each cash advance, \$5 minimum. The transaction fee for balance transfers is 3.0% of the amount of each balance transfer, \$5 minimum, \$75 maximum. However, we will waive the balance transfer transaction fees on balances you transfer in response to this offer.

New cardmembers only. Subject to credit approval. Additional terms and conditions apply. © 2005 Citibank (South Dakota), N.A. Citi, Citibank, Citi with Arc Design and Platinum Select are registered service marks of Citigroup Inc. MasterCard® is a registered trademark of MasterCard International Incorporated.





Xbox.com | Xbox.com Home

http://www.xbox.com/en-US/

United States International Forums Sign In

XBOX

Get Your Gamercard

My Xbox

Xbox 360 Games Accessories Xbox LIVE Support Community

Latest Headlines

Even More Fighters  
The iconic characters from Star Wars join the fray.

Media Extender. In Disguise.

Jump in. XBOX 360 LIVE

Advertisement

Family Game Night  
You could win great prizes from T-Mobile and Xbox.

Comic-Con 2008  
All of the big news from the show in San Diego.

Netflix  
Thousands of movies to watch on your console.

Game with Fame  
Play NCAA Football 09 on LIVE with Jason Aldean.

Media Extender. Undercover.

Jump in. XBOX 360 LIVE

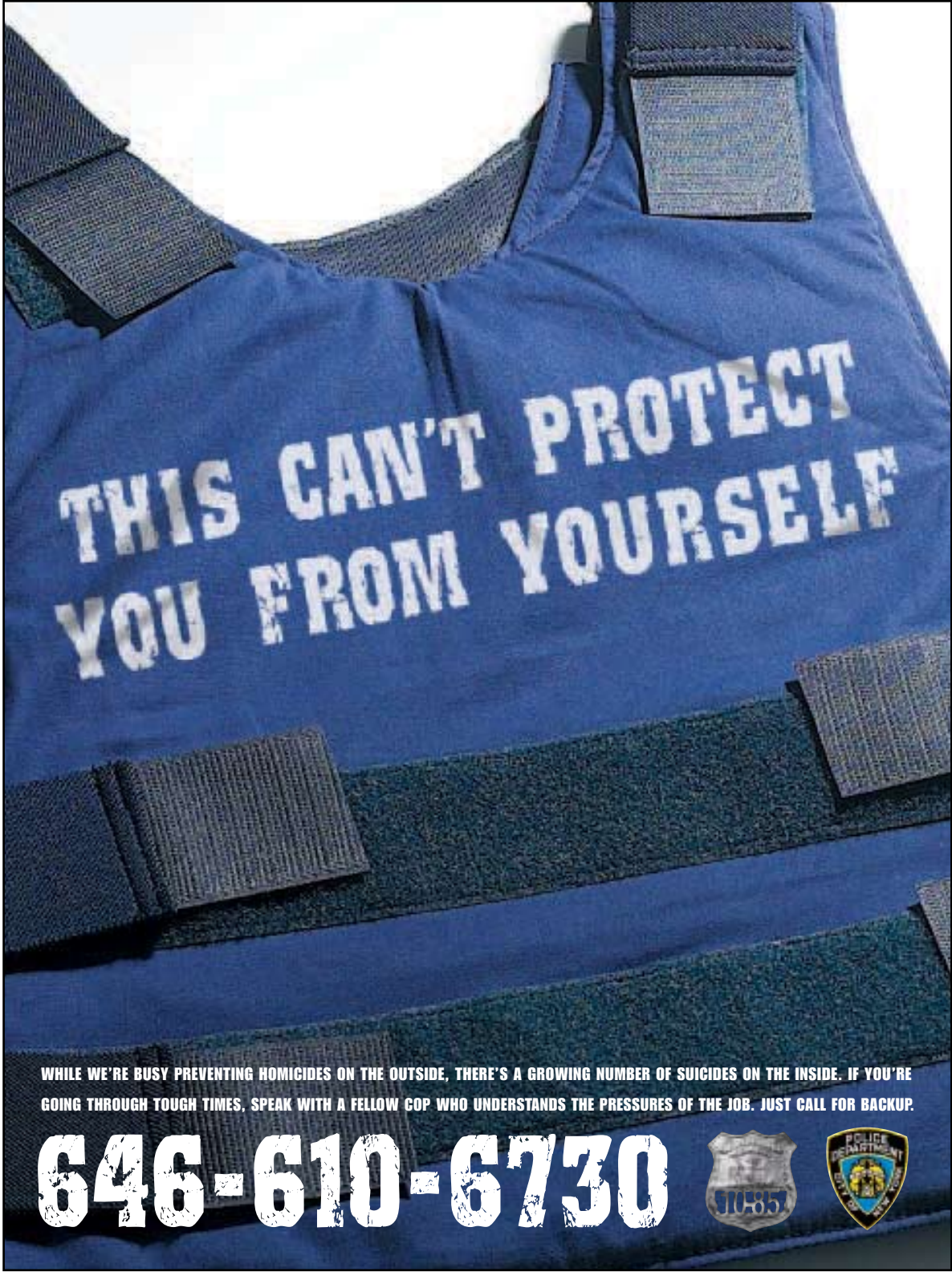
Media Extender. Incognito.

Jump in. XBOX 360 LIVE

Microsoft Game Studios | Jobs | Forums | Developers | Xbox Gear Store | Newsletter | Mobile | Feedback | RSS

Microsoft ©2008 Microsoft Corporation. All Rights Reserved  
Privacy Statement | Xbox.com Terms of Use | Code of Conduct

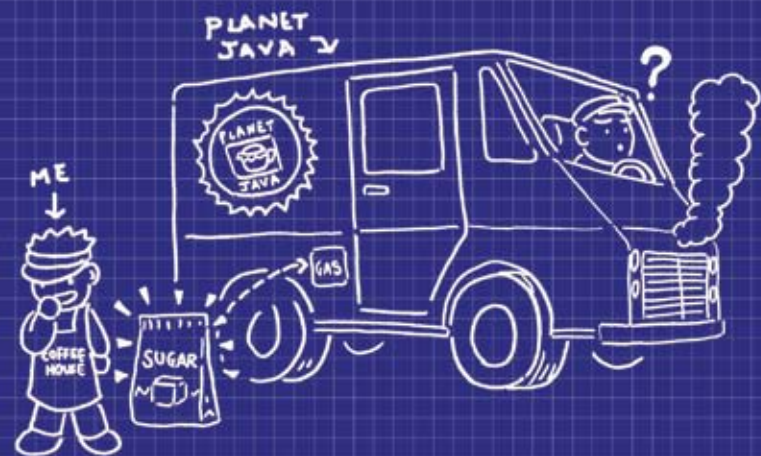
Read www.xbox.com



WHILE WE'RE BUSY PREVENTING HOMICIDES ON THE OUTSIDE, THERE'S A GROWING NUMBER OF SUICIDES ON THE INSIDE. IF YOU'RE GOING THROUGH TOUGH TIMES, SPEAK WITH A FELLOW COP WHO UNDERSTANDS THE PRESSURES OF THE JOB. JUST CALL FOR BACKUP.

**646-610-6730**





PLAN #12

**PLEASE DON'T BE LIKE THAT, MISTER COFFEE HOUSE GUY.** We know it hurts that our delicious iced coffee is better than yours, but if you don't stop with your little sabotage schemes, well, we're just going to have to call mister policeman on you. And we certainly don't want that to happen, now do we mister coffee house guy? [PLANET-JAVA.COM](http://PLANET-JAVA.COM)



©2004 PJ Bean Co., Inc. "Planet Java", "Javadelic", "Caramocha" and "Tremble" are trademarks of PJ Bean Co., Inc.

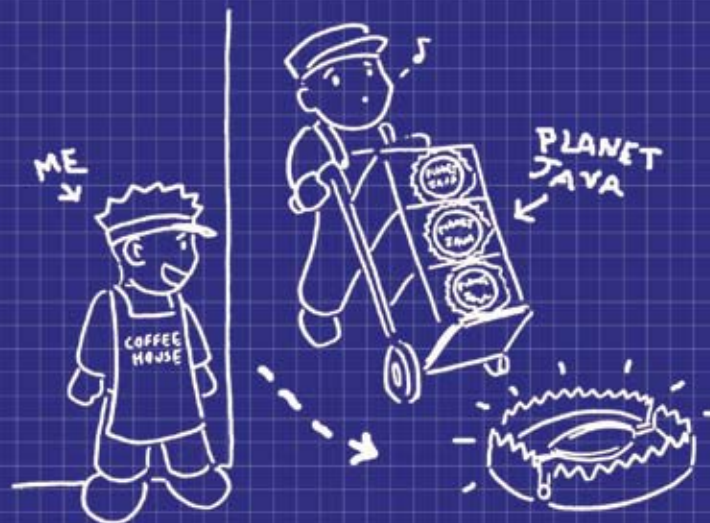


PLAN #45

**THAT'S JUST NOT FUNNY, MISTER COFFEE HOUSE GUY.** We know you hate that people like our iced coffee in a bottle better than your frou-frou coffee-house variety. Well maybe if you spent a little less time plotting against our iced coffee and a little more time trying to improve yours, things might be different. Not likely, though. People love our coffee. [PLANET-JAVA.COM](http://PLANET-JAVA.COM)



©2004 PJ Bean Co., Inc. "Planet Java", "Javadelic", "Caramocha" and "Tremble" are trademarks of PJ Bean Co., Inc.

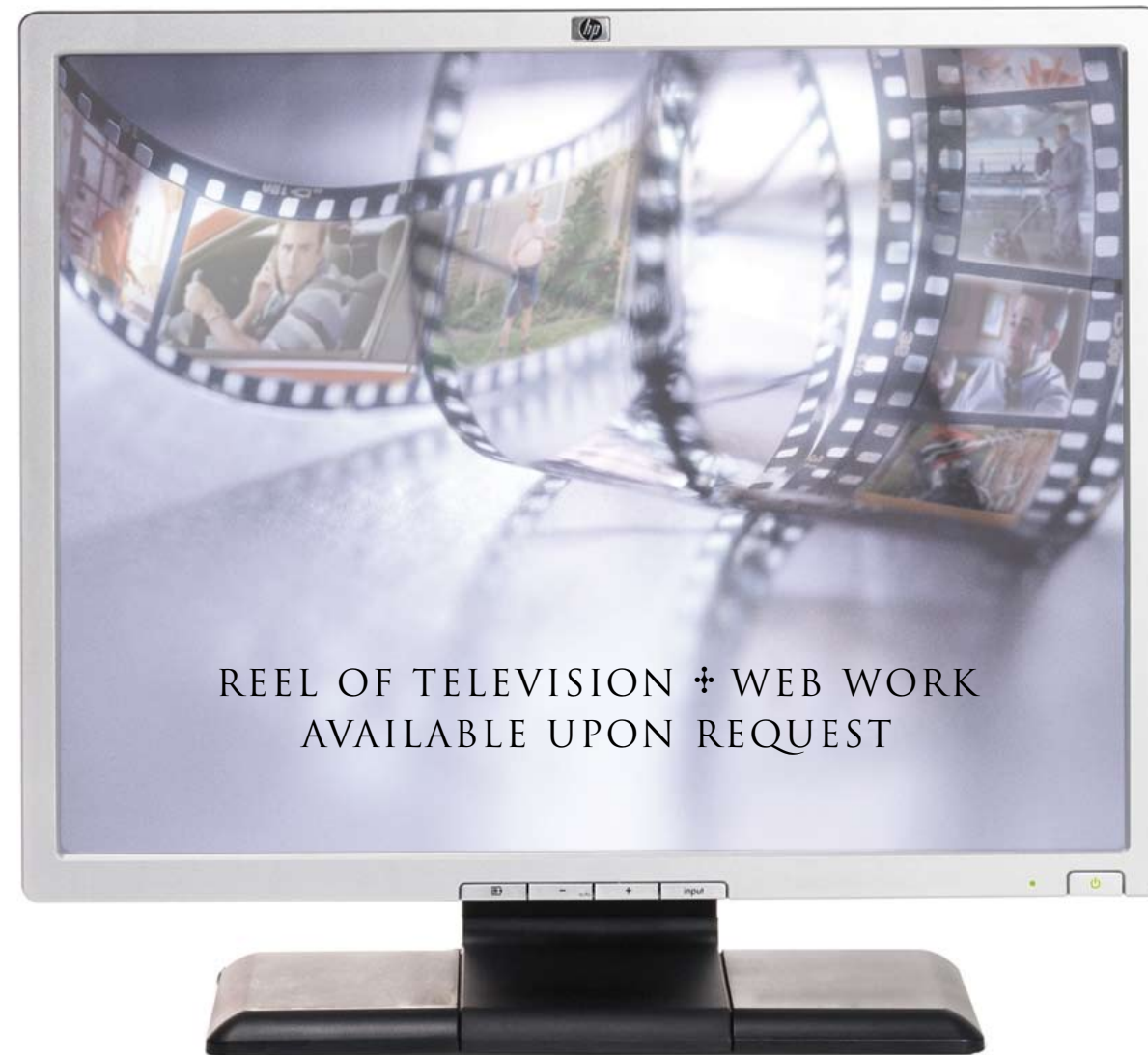


PLAN #31

**DON'T TAKE IT SO HARD, MISTER COFFEE HOUSE GUY.** Okay, so even with all your fancy coffee-house trappings – the muted color scheme, the adult contemporary soundtrack, the loathsome baristas – people still like our iced coffee better than yours. That's no reason to despair. After all, people will always come for your free wi-fi connection. [PLANET-JAVA.COM](http://PLANET-JAVA.COM)



©2004 PJ Bean Co., Inc. "Planet Java", "Javadelic", "Caramocha" and "Tremble" are trademarks of PJ Bean Co., Inc.



# CURRICULUM + VITAE

WUNDERMAN/Y&R BRANDS (NEW YORK) + SENIOR ART DIRECTOR  
HEWLETT-PACKARD, NATIONWIDE INSURANCE, CITIBANK, MICROSOFT, AT&T  
FEBRUARY 2004 — PRESENT

(VARIOUS) + FREELANCE SENIOR ART DIRECTOR  
AMERICAN EXPRESS, COLUMBIA HOUSE, AOL, GUND, NATHAN'S FAMOUS  
DECEMBER 2001 — JANUARY 2004

CMG + ART DIRECTOR  
VIRGIN ATLANTIC AIRLINES, PROTOSTORM.COM, PLANET JAVA, JOSE CUERVO TEQUILA  
SEPTEMBER 1999 — NOVEMBER 2001

GRIFFIN BACAL/DDB + ART DIRECTOR  
HASBRO INTERACTIVE, MICROPROSE, SHARP ELECTRONICS, ATARI  
SEPTEMBER 1998 — AUGUST 1999

MAD DOGS & ENGLISHMEN + FREELANCE ART DIRECTOR  
BLUE MOON ALES, NEW YORK ISLANDERS, NICK AT NITE, EQUAL EXCHANGE COFFEE  
DECEMBER 1997 — JULY 1998

THE SAWTOOTH GROUP + FREELANCE ART DIRECTOR  
SARANAC BEER  
OCTOBER 1997

MAD DOGS & ENGLISHMEN + CREATIVE INTERN  
NICK AT NITE/TV LAND, THE DRAWING CENTER GALLERY, BEST CELLARS  
JULY 1997 — SEPTEMBER 1997

SYRACUSE UNIVERSITY + NEWHOUSE SCHOOL OF PUBLIC COMMUNICATIONS  
BA IN ADVERTISING/CREATIVE MAY 1997

917.838.9439 + ATAM@EROLS.COM + HTTP://USERS.RCN.COM/ATAM

---